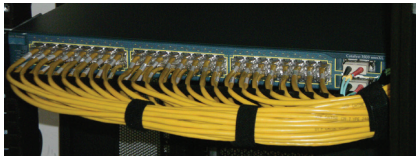
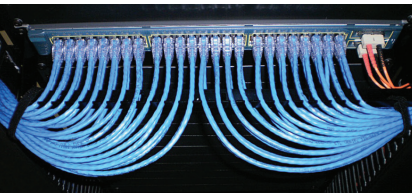


# CE COMM CABLE MANAGEMENT SYSTEM

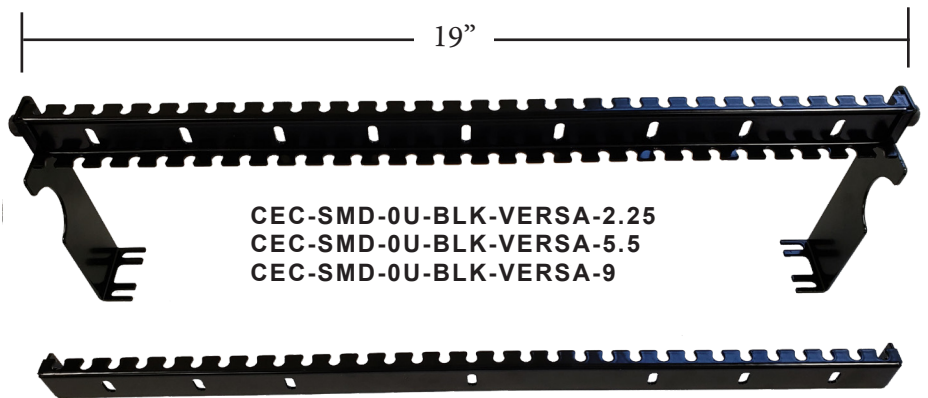
STANDOFFS COME IN 2.25", 5.5" & 9"  
TAKES UP ZERO U OVER THE SWITCH



Patch Panel and Switch with 5" offset bar



Fiber optic jumpers shown with fiber kit.  
Prevents chafing and holds fiber firmly in place



CEC-SMD-0U-BLK-VERSA-2.25  
CEC-SMD-0U-BLK-VERSA-5.5  
CEC-SMD-0U-BLK-VERSA-9

## CE COMM BRACKETS

- Takes up Zero U over the switch
- Allows for ease of installation
- Can install in live environment
- Allows to see live ports
- Allows to see all labeling
- **COMING SOON:** 26awg-30awg managers

We now have available managers for  
HP 5412 and 5406



Mark Weinegger  
Sales Executive  
Office: 508-528-1520

MADE IN THE USA.

